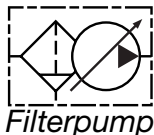


700 Series

790R30

Fuel Heater/Water Separator



The 700 series fuel filter/water separator assembly is a two-stage filtration and repriming system featuring a 12 volt solid-state controlled electronic priming pump, a vent valve to purge air, a 100 micron prefilter screen, a 30 micron Aquabloc®II Spin-On element, a water sensor probe, a clear collection bowl and a weather proof control box. This complete fuel management system isolates contaminants present in diesel fuels and traps them prior to reaching the fuel injection system, protecting the engine's fuel system from costly and premature failure.

Note:

All Racor filter materials and seals are compatible with ultra-low sulphur diesel (ULSD) fuel and B2 to B20 Biodiesel.



Specifications

Maximum Flow Rate: (with diesel)	90 GPH (341 LPH)
Inlet/Outlet Port Size	7/8"-14 UNF
Housing Material	Aluminum
Replacement Element	See Element Chart
Micron Rating	30
Minimum Service Clearance (below filter)	2.0 in. (5.1 cm)
Height	12.8 in. (32.5 cm)
Depth	6.5 in. (16.5 cm)
Width	4.3 in. (11.0 cm)
Weight (dry)	6.5 lb (3.0 kg)
Maximum Working Pressure ¹	15.0 PSI (1.0 bar)
Water Removal Efficiency	99%
Clean Pressure Drop	0.7 PSI (4.8 kPa)
Case Quantity	6
Ambient Temperature Range	-40° to +250°F (-40° to +121°C)
Maximum Fuel Temperature	190°F (32°C)

Notes: ¹Vacuum side installations only.

Questions? Contact Technical Support:
800 344 3286 or 209 521 7860 ext. 7555
e-mail: racortech@parker.com

700 Series

12 Volt Replacement Parts

- | <u>Parts</u> | <u>Description</u> |
|--------------------|---|
| 1. RK22895 | Replacement Pump Head with Pump |
| 2. RK22933 | 12 vdc Primer Pump Kit (Includes pump, o-rings, screws, prescreen element and more. Does NOT include mounting head.) |
| 3. RK22902 | Wire Harness Kit |
| 4. RK22943 | Control Panel Kit |
| 5. RK 22798 | Bypass Valve Kit |
| 6. RK 21501 | Gasket Kit (Includes #'s 6 and 8) |

7. (see below) Replacement Elements

<u>Model</u>	<u>2 Micron</u>	<u>10 Micron</u>	<u>30 Micron</u>
745R	R45S	R45T	R45P
760R	R60S	R60T	R60P
790R	R90S	R90T	R90P
7125R	R125S	R125T	R125P

- | | |
|--------------------------|--|
| 8. RK 21501 | Gasket Kit (Includes #'s 6 and 8) |
| 9. RK 21113-13-11 | Clear Bowl Kit (Includes #'s 8 and 10) |
| 10. RK 30476 | Self-venting Drain Kit |
| 11. RK 30902 | Water Sensor Probe Kit |

Additional Parts (not shown)

- | | |
|------------------|------------------------------------|
| RK11-1970 | Port Plug Kit |
| RK22934 | Prescreen Element Kit (100 micron) |

